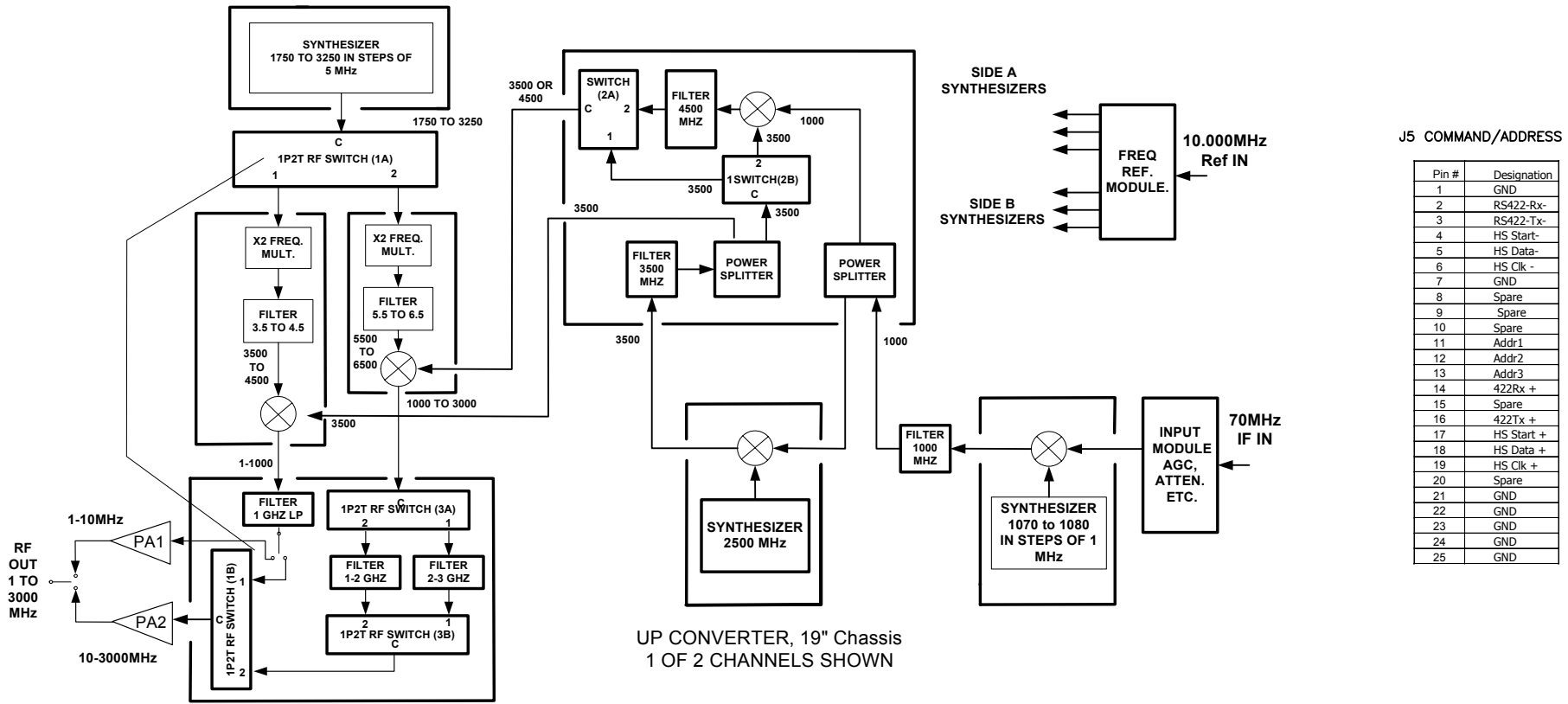
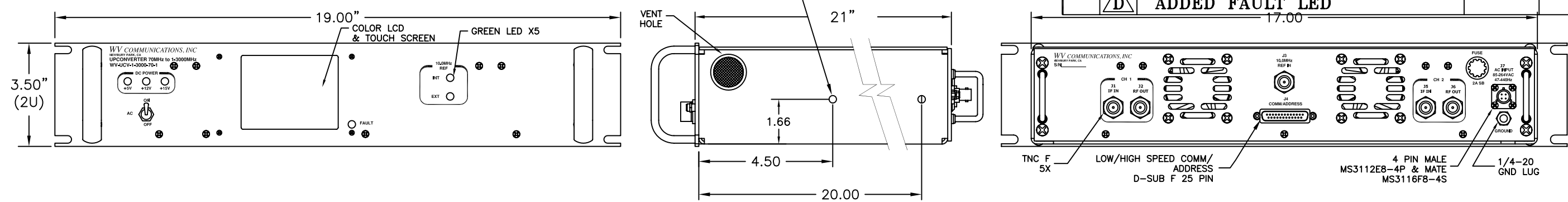


**\*\* PROPRIETARY DATA \*\***  
 THIS DOCUMENT CONTAINS DATA WHICH IS PROPRIETARY OR CONFIDENTIAL TO WV COMM (WV COMMUNICATIONS INCORPORATED). THIS DOCUMENT AND THE DATA CONTAINED HEREIN SHALL NOT BE USED, DUPLICATED, OR ALTERED WITHOUT THE EXPRESSED WRITTEN CONSENT OF WV COMM. ALL RIGHTS ARE RESERVED.

REVISIONS				
ZONE	REV	DESCRIPTION	DATE	APPROVED
	B	Added LCD Display		
	C	ADDED J7 TABLE	01-21-04	J.M.
	D	ADDED FAULT LED		



**DUAL CHANNEL CONVERTER SPECIFICATIONS:**  
**IF INPUT FREQUENCY:** 70 ± 12.5 MHz  
**RF OUTPUT FREQUENCY RANGE:** 1-3000 MHz  
**RF INPUT POWER:** 0 dBm Maximum  
**RF OUTPUT FLATNESS:** ± 0.5 dB Maximum (± 0.25 dB Typical)  
**RF OUTPUT POWER:** + 22 dBm Minimum at 1 dB Gain Compression  
**CONVERSION GAIN:** 40 dB Nominal (-20 in, +20 dB out typical)  
**GAIN ADJUSTMENT RANGE:** 60 dB Nominal  
**GAIN ADJUSTMENT STEPS:** 1 dB Nominal  
**NOISE FIGURE:** 20 dB Maximum  
**TUNING TIME:** 100 μsec Maximum (including Digital Command timing in High Speed Bus Communication Mode)  
**HARMONICS:** 40 dBc Minimum  
**NOISE FLOOR:** -70 dBm Minimum  
**SURIOUS OUTPUTS:** 70 dBc Minimum (signal related Non Harmonic)  
**CARRIER STABILITY:** ± 2 × 10<sup>-6</sup> Maximum over 0-55 °C  
**PHASE NOISE at 1.0 KHz OFFSET:** -95 dBc Maximum  
**EXTERNAL 10.0 MHz REFERENCE:** Auto switch to internal 10.00 MHz when the External 10.00 MHz Reference is not present  
**EXTERNAL 10.0 MHz LEVEL:** 0 dBm ± 3 dB / 50 Ohm  
**COMMAND / CONTROL:** Front Panel Color LCD Touchscreen; Remote RS-232C/422/485 and High Speed 10 MB/Sec Proprietary Serial Bus  
**WEIGHT:** 25 Lbs. Maximum  
**INPUT VOLTAGE:** 85-264 VAC at 2/1A. Single Phase 47-440 Hz Auto select  
**AC INPUT POWER:** 200 W Maximum  
**FRONT PANEL FINISH:** Black per FED-STD 595 27038

J5 COMMAND/ADDRESS

Pin #	Designation
1	GND
2	RS422-Rx-
3	RS422-Tx-
4	HS Start-
5	HS Data-
6	HS Clk -
7	GND
8	Spare
9	Spare
10	Spare
11	Addr1
12	Addr2
13	Addr3
14	422Rx +
15	Spare
16	422Tx +
17	HS Start +
18	HS Data +
19	HS Clk +
20	Spare
21	GND
22	GND
23	GND
24	GND
25	GND

J7 AC INPUT

PIN	DESIGNATION
A	LIVE
B	NEUTRAL
C	GND, CHASSIS
D	N/C

900-50134-002	ARGON
NEXT ASSEMBLY	USED ON
APPLICATION	DO NOT SCALE DRAWING

UNLESS OTHERWISE SPECIFIED: DIMENSIONS ARE IN INCHES. TOLERANCES ARE:  
 FRACTIONS DECIMALS ANGLES HOLES  
 ± 1/84 .XX ± .01 ± 0°30' .XX ± .005  
 .XXX ± .005 .XXX + .003  
 MACHINED FINISH: 32 RMS REMOVE BURRS .005 MAX

APPROVALS	DATE
DRAWN G. GODDARD	3/5/03
CHECKED J.MEDINA	01-21-04
MECH ENGR	
ELEC ENGR	
P/PA	
APPROVED	

**WV Communications** 1176 Tourmaline Dr. Newbury Park, CA

**DUAL CHANNEL CONVERTER**  
 70.0MHz to 1-3000MHz  
 WV-UCV-1-3000-70-1

SIZE	CAGE CODE	DWG. NO.	REV
B	1GFQ7	050-50380	D

SCALE NONE SHEET 1 OF 1

DC-FORM-00015-S, REV C, 06/98