

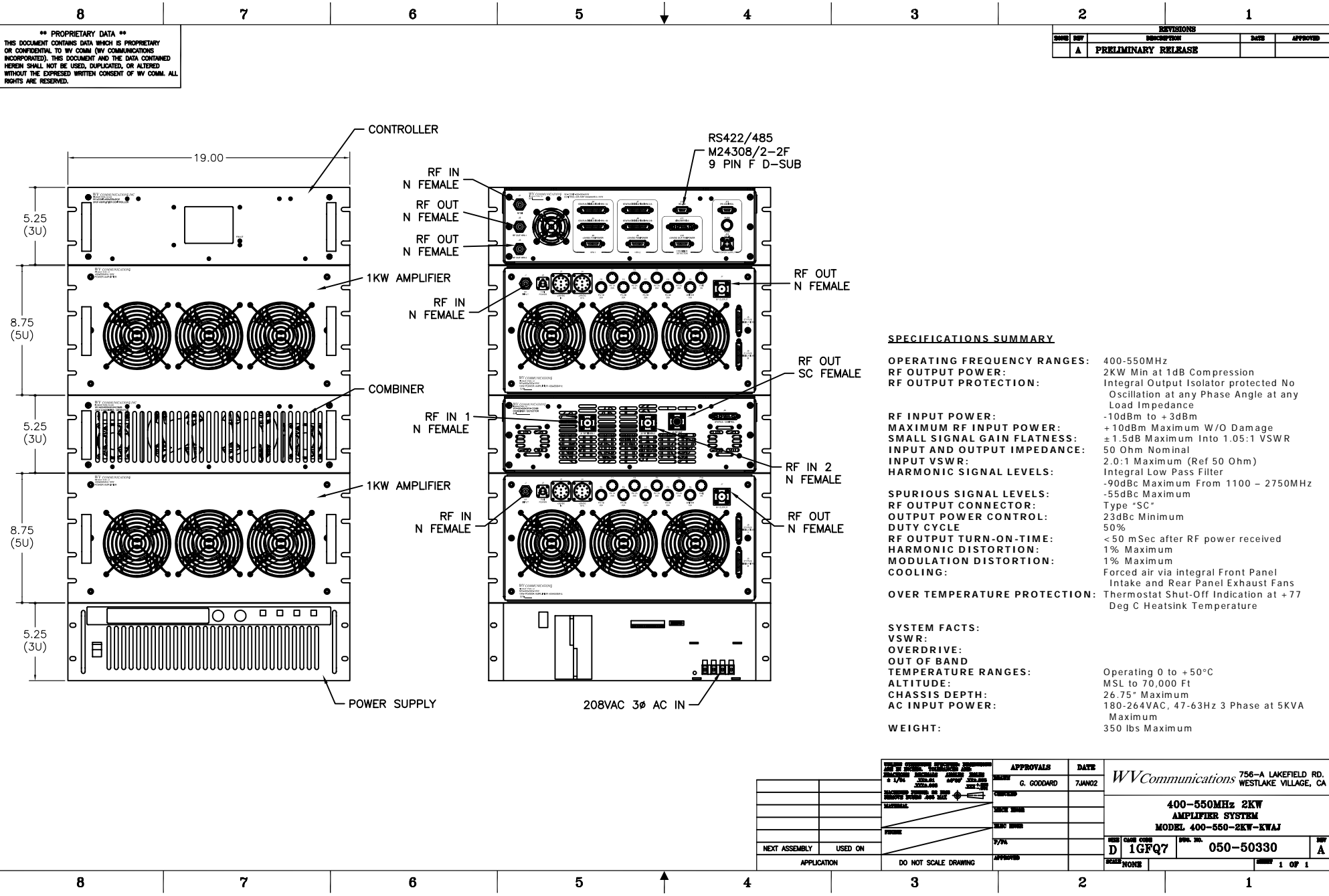
**\*\* PROPRIETARY DATA \*\***  
 THIS DOCUMENT CONTAINS DATA WHICH IS PROPRIETARY OR CONFIDENTIAL TO WVC COMMUNICATIONS (WVC COMMUNICATIONS INCORPORATED). THIS DOCUMENT AND THE DATA CONTAINED HEREIN SHALL NOT BE USED, DUPLICATED, OR ALTERED WITHOUT THE EXPRESSED WRITTEN CONSENT OF WVC COMM. ALL RIGHTS ARE RESERVED.

REVISIONS			
REV	DATE	DESCRIPTION	APPROVED
A		PRELIMINARY RELEASE	

D

B

A



**SPECIFICATIONS SUMMARY**

**OPERATING FREQUENCY RANGES:** 400-550MHz  
**RF OUTPUT POWER:** 2KW Min at 1dB Compression  
**RF OUTPUT PROTECTION:** Integral Output Isolator protected No Oscillation at any Phase Angle at any Load Impedance  
**RF INPUT POWER:** -10dBm to +3dBm  
**MAXIMUM RF INPUT POWER:** +10dBm Maximum W/O Damage  
**SMALL SIGNAL GAIN FLATNESS:** ±1.5dB Maximum Into 1.05:1 VSWR  
**INPUT AND OUTPUT IMPEDANCE:** 50 Ohm Nominal  
**INPUT VSWR:** 2.0:1 Maximum (Ref 50 Ohm)  
**HARMONIC SIGNAL LEVELS:** Integral Low Pass Filter  
 -90dBc Maximum From 1100 - 2750MHz  
 -55dBc Maximum  
**SPURIOUS SIGNAL LEVELS:** Type "SC"  
 23dBc Minimum  
**OUTPUT POWER CONTROL:** 50%  
**DUTY CYCLE:** <50 mSec after RF power received  
**RF OUTPUT TURN-ON-TIME:** 1% Maximum  
**HARMONIC DISTORTION:** 1% Maximum  
**MODULATION DISTORTION:** 1% Maximum  
**COOLING:** Forced air via Integral Front Panel Intake and Rear Panel Exhaust Fans  
**OVER TEMPERATURE PROTECTION:** Thermostat Shut-Off Indication at +77 Deg C Heatsink Temperature

**SYSTEM FACTS:**  
**VSWR:**  
**OVERDRIVE:**  
**OUT OF BAND TEMPERATURE RANGES:** Operating 0 to +50°C  
**ALTITUDE:** MSL to 70,000 Ft  
**CHASSIS DEPTH:** 26.75" Maximum  
**AC INPUT POWER:** 180-264VAC, 47-63Hz 3 Phase at 5KVA Maximum  
**WEIGHT:** 350 lbs Maximum

USE OF THIS DRAWING IS LIMITED TO THE PROJECT AND ASSEMBLY SHOWN HEREON. IT IS NOT TO BE USED FOR ANY OTHER PROJECT OR ASSEMBLY WITHOUT THE EXPRESS WRITTEN CONSENT OF WVC COMMUNICATIONS.		<b>APPROVALS</b> G. GOODARD DATE: 7JAN02	<b>DATE</b> 7JAN02	<b>WVC Communications</b> , 756-A LAKEFIELD RD. WESTLAKE VILLAGE, CA
NEXT ASSEMBLY USED ON		DATE DRAWN DATE CHECKED DATE APPROVED	DRAWN BY CHECKED BY APPROVED BY	<b>400-550MHz 2KW AMPLIFIER SYSTEM</b> <b>MODEL 400-560-2KW-KWJ</b>
APPLICATION	DO NOT SCALE DRAWING	REV: D CUS: 1GFQ7	PRC: 050-50330	SHEET: 1 OF 1

PR. NO. 050-50330

REV. NO. 1 OF 1